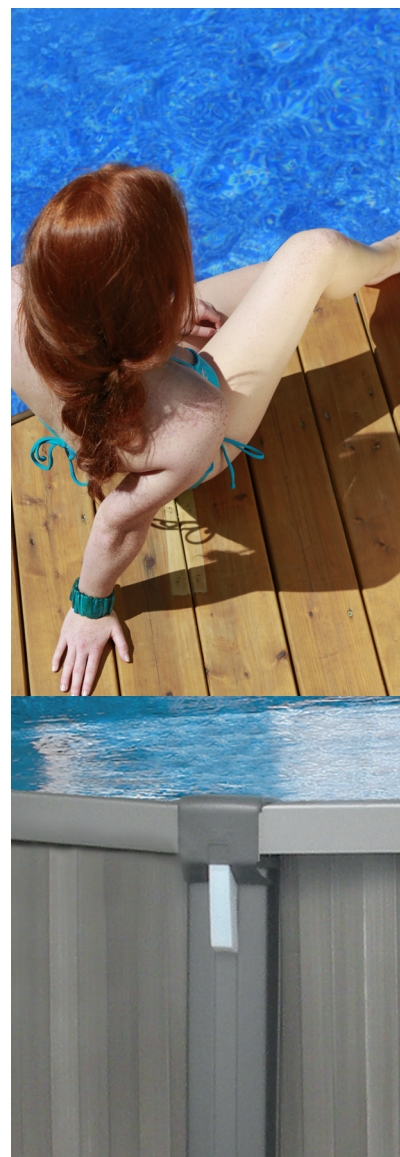




Easy to install and easy on the budget, an above-ground pool is a wise choice. It makes the whole family happy! Jump, splash, dive... the fun of summer is right there in your own backyard! Thanks to a wide range of shapes, materials and finishes, you and Trevi can create the pool that's right for your family, no matter your needs. Want a pool for fun? For the kids? For relaxing at the end of a busy day? With Trevi, you will create a delightful, relaxing refuge in your own backyard.

TREVI, THE SENSIBLE CHOICE!



178
TREVI **STELLAR**

INNOVATION
SERIES

When you purchase a Trevi pool, you also acquire peace of mind, unparalleled manufacturing quality and safe materials. When you purchase a Trevi pool, you will be satisfied.

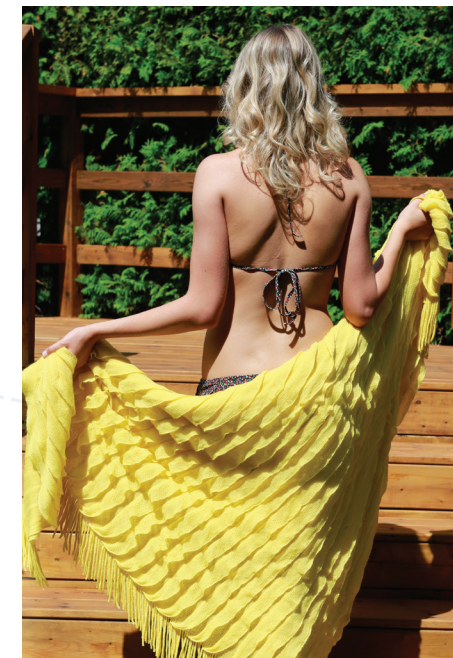
THAT'S THE TREVI DIFFERENCE!



trevifab.com



2015



ABOVE-GROUND POOL

178
TREVI **STELLAR**

INNOVATION
SERIES

178 TREVI STELLAR

INNOVATION SERIES

The **Trevi 178 Stellar Innovation** offers quality and robustness at an affordable price. Thanks to its 7-inch wide resin top seat and reinforced uprights, your kids can splash around all summer long. This pool is especially suited for resin pool enthusiasts whose top criteria are quality and a reasonable price.

MULTICOLOR SOLAR LIGHTING (OPTIONAL)

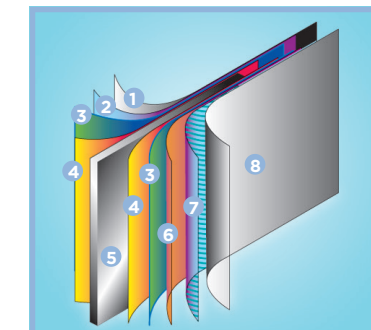


TECHNICAL DETAILS



SPECIAL FEATURES
Superior quality resin top seat features uniform calibration, UV treatment against discoloration, and a molecular memory to prevent warping. Plus, it's scratch-resistant!

Resin bottom safety track with Secure-Lock™ system for more stability.



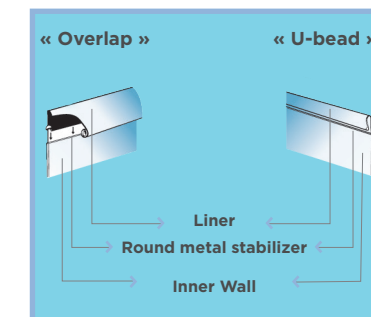
STEEL WALL COMPONENTS

1. Plasticized SP coating
2. Molten zinc coat
3. Primer coat
4. Application of an alkaline solution to cleanse the oxides
5. Galvanized steel wall core
6. Chromate anti-rust coat
7. Heat-hardened inlay
8. Ultra-resistant polymer

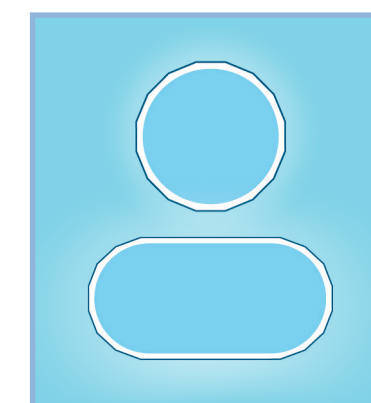


STRUCTURAL ELEMENTS

1. 7" (17.80 cm) extruded resin top seat
2. Resin coping
3. Resin seat cap
4. Resin joint plate
5. Multicolored LED solar lamp (optional)
6. 7" galvanized steel upright
7. 52" (1.32 m) or 54" (1.37 m) steel wall



TREVICLIP: EXCLUSIVE LINER LOCKING SYSTEM
Prevents liner setback in case of movement caused by freezing or thawing, and increases overall pool stability. (Available only with "U-bead" liner)



AVAILABLE STYLES

Round:
12' (3.66 m), 15' (4.57 m), 18' (5.48 m), 21' (6.40 m), 24' (7.31 m), 27' (8.23 m), 30' (9.14 m)

Oval:
12' x 18' (3.66 m x 5.48 m)
12' x 21' (3.66 m x 6.4 m)
12' x 24' (3.66 m x 7.31 m)
15' x 24' (4.57 m x 7.31 m)
15' x 30' (4.57 m x 9.14 m)
18' x 33' (5.48 m x 10.06 m)